



UNIVERSITY OF
FLORIDA

IFAS EXTENSION

DeSoto County Beef Newsletter

2150 NE Roan Street, Arcadia, FL 34266



Sign up now to attend the 1st
Annual Florida Deer/Turkey
Management Shortcourse

August 2006 / Volume 28 Number 8

JAPAN REOPENS TO U.S. BEEF

Japan announced the reopening of its market to U.S. beef from cattle less than 20 months of age. USDA Secretary Mike Johanns cited the long process of confirming the U.S. system is in full compliance with Japan's import requirements and confirming the safety -- via "clear, scientific data" -- of U.S. beef. He also said: "Nations need reasonable methods of addressing the inadvertent shipment of products that don't meet an importing country's specifications, without disrupting an entire trading relationship. The U.S. has such methods of addressing noncompliant shipments from Japan, as well as our other trading partners, and I am hopeful that going forward Japan will take a similar approach." Japan opened its market to U.S. beef in December 2005 but closed it again the following month after a U.S. veal shipment was found to contain product not allowed under the original agreement. In 2003, the U.S. exported \$1.4 billion worth of beef and beef products to Japan. **Source—P. Scott Shearer, Cow-Calf Weekly, July 28, 2006**

1ST ANNUAL FLORIDA DEER/TURKEY MANAGEMENT SHORTCOURSE

On August 18, 2006, we will be having the 1st Annual Florida Deer/Turkey Management Shortcourse at the Turner Center Exhibit Hall beginning at 8:00 AM. This program is designed to educate landowners, managers, and hunters on the ecology and management of Deer and Turkey in Florida. **Registration is only \$50 (Due August 11th) and includes a noon smoked prime rib meal. Late Registration cost is \$75.00.** See the attached [link](#) for further information. **It**

MARKET INFORMATION

July 31, 2006

| | 7/29/06 | Last Week | Last Year |
|--|---------|-----------|-----------|
| 5 AREA WEEKLY WEIGHTED CATTLE PRICE | | | |
| Live Steer | 79.48 | 79.68 | 79.51 |
| Live Heifer | 79.55 | 79.53 | 79.65 |
| Dressed Steer | 126.04 | 126.22 | 122.99 |
| Dressed Heifer | 125.98 | 126.00 | 122.69 |

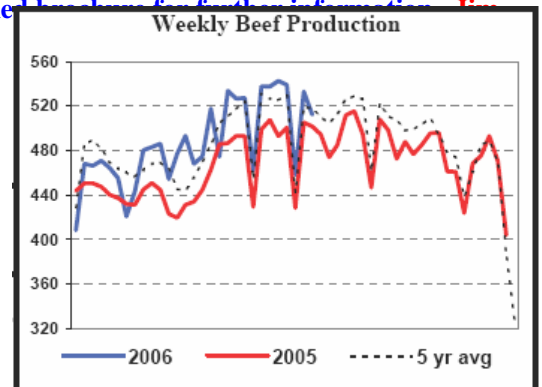
http://www.ams.usda.gov/mnreports/lm_ct150.txt

| | 7/29/06 (Estimate) | Last Week (Estimate) | Last Year (Actual) |
|--------------------------------|-----------------------|-------------------------|-----------------------|
| BEEF PRODUCTION | | | |
| Slaughter | 669,000 | 657,000 | 637,000 |
| Live Weights | 1274 | 1272 | 1262 |
| Dressed Weights | 783 | 783 | 779 |
| Beef Production (M. of Pounds) | 521.9 | 512.3 | 493.7 |

http://www.ams.usda.gov/mnreports/SJ_LS712.txt

| | 7/15/06 | Last Week | Last Year |
|---------------------------------|---------|-----------|-----------|
| National Grading Percent | | | |
| Prime | 2.68% | 2.43% | 2.71% |
| Choice | 52.85% | 52.33% | 54.23% |
| Select | 37.89% | 38.14% | 35.57% |

http://www.ams.usda.gov/mnreports/NW_LS196.txt



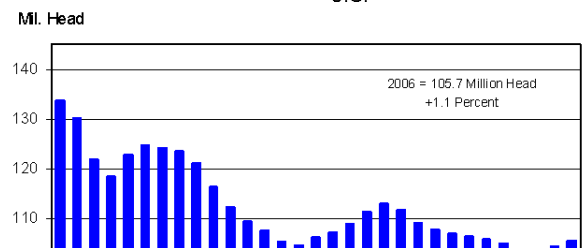
Choice/Select Spread

7/28/06

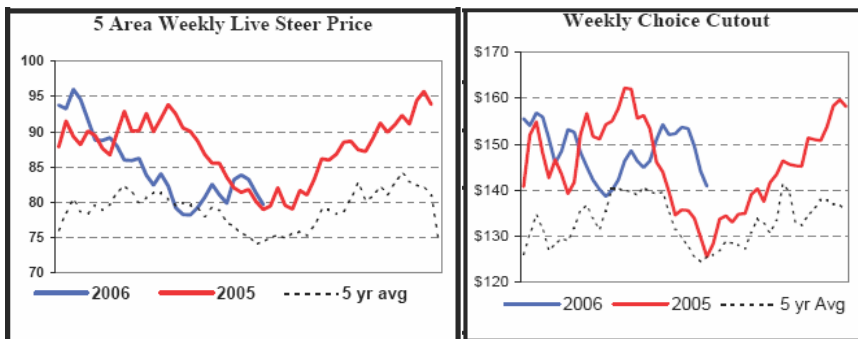
\$16.29/cwt

http://www.ams.usda.gov/mnreports/lm_x_b403.txt

JULY 1 CATTLE INVENTORY
U.S.



only to individuals and institutions that function with non-discrimination with respect to race, creed status, national origin, political opinions or affiliations. U.S. Department of Agriculture, Cooperative University Cooperative Extension Program, and Boards of Count



The summary below reflects the week ended June 27, 2006 for Medium and Large 1 -- 500- to 550-lb., 600- to 650-lb., and 700- to 750-lb. heifers and steers. **Source: Beef Stocker Trends, July 25, 2006.**

| State | Volume | Steers | | | Heifers | | |
|-------------|--------|--------------|--------------|--------------|--------------|--------------|----------------|
| Calf Weight | | 500-550 lbs. | 600-650 lbs. | 700-750 lbs. | 500-550 lbs. | 600-650 lbs. | 700-750 lbs. |
| TX | 30,000 | \$121.21 | \$123.62 | \$115.51 | \$115.62 | \$110.38 | \$104.46 |
| AL | 16,800 | \$115-122 | \$107-112 | \$98-106 | \$109-117 | \$101-107 | \$92.00-100.00 |
| TN | 10,100 | \$114.54 | \$108.28 | \$102.37 | \$106.89 | \$100.17 | \$92.64 |
| FL | 7,500 | \$100-117 | \$90-113 | \$85-91 | \$94-112 | \$89-102 | \$91.00-95.00 |
| GA | 11,100 | \$102-122 | \$95-112 | \$92-105.50 | \$98-115.50 | \$90-105 | \$95.50-97.00 |



CORN:

CORN: Kansas City US No 2 rail White Corn was 2 to 3 cents lower from 2.37- 2.40 per bushel. Kansas City US No 2 truck Yellow Corn was 5 to 6 cents lower at 2.17 per bushel. Omaha US No 2 truck Yellow Corn was 3 cents lower from 2.07-2.09 per bushel. Chicago US No 2 Yellow Corn was 6 ¾ to 9 ¾ cents lower from 2.17 ¾-2.23 ¾ per bushel. Toledo US No 2 rail Yellow corn was 3¾ to 4 ¾ cents lower from 2.13 ¾-2.23 ¾ per bushel. Minneapolis US No 2 Yellow Corn rail was 5 ¼ cents higher at 1.79 ¾ per bushel.

Source: USDA Weekly National Grain Market Review, Friday July 28, 2006

[http://www.ams.usda.gov/mnreports/SJ GR851.txt](http://www.ams.usda.gov/mnreports/SJ_GR851.txt)

BEEF MARKETS--JULY PLACEMENTS SURGE; COW HERD EXPANSION SLOWS

The July Cattle on Feed report and the mid-year Cattle Inventory released last Friday tell the story of continuing drought, writes Darrell Mark, University of Nebraska economist, at www.lmic.info/. After a drop in May placements, feeders placed 10.7% more cattle in June, mostly lighter weight feeders. Placements of cattle less than 600 lbs. were up 37%, and calves 600-700 lbs. were up 24%. Meanwhile, placements more than 700 lbs. fell 5-6% from 2005. Mark says the higher placements of lighter cattle suggest drought is driving light stockers off grass early, and early weaning may be taking place. Thus, supplies of feeder cattle may be tighter than expected this fall. He says the trend also points to increased slaughter numbers in 2007's first quarter, which may pressure fed prices. Mark calls the growing front-end supply of cattle on feed "concerning." Cattle on feed for more than 120 days (3.9 million head), is up 18.2% from last year, the fourth consecutive month of double-digit increases. And, it's translating to increasingly larger dressed weights. Meanwhile, the Cattle Inventory report estimated the July 1 all-cattle and calf inventory at 105.7 million head, up 1.1% from July 1, 2005. Both the beef-cow and dairy-cow inventory grew only 100,000 head from last year. Mark believes limited feed supplies and drought are dampening herd expansion, while the number of heifers held for beef cow replacements in 2006 (5 million head) was unchanged from 2005. That slow growth in beef-cow numbers portends just a 0.3% increase in the 2006 calf crop. At 37.9 million calves, that's less than 400,000 head more than the 2004 calf crop, which was the smallest in history. Thus, he says, fall calf supplies are expected to remain tight, which points to another year of relatively high feeder cattle prices.

Source--- Joe Roybal, Cow-Calf Weekly, July 28, 2006

POLITICIAN MOVES TO BAN CARBON MONOXIDE IN MEAT PACKAGING

Rep. Rosa DeLauro (D-CT) says she'll introduce legislation to ban the use of carbon monoxide (CO) in the packaging of

meat. Currently, the Food and Drug Administration allows the use of CO for meat packaging, which recent Texas Tech University and University of Georgia research shows prevents the growth of pathogenic bacteria. Melvin Hunt, Kansas State University, says the "effort to discredit the science that went into it -- and efforts to discredit the federal agency that reviewed it three times -- is scientifically inaccurate and unfortunate." For more on the use of CO in meat packaging, type in a web search engine: [Carbon Monoxide in Meat Packaging: Myths and Facts](#). **Source—P. Scott Shearer, Cow-Calf Weekly, July 28, 2006**

TRADE NEGOTIATIONS COLLAPSE

International trade negotiations broke down this week in Geneva, Switzerland, suspending the "Doha Round" of talks aimed at breaking down trade barriers and reducing world poverty. In a news conference following the suspension, U.S. Trade Representative Susan C. Schwab and Ag Secretary Mike Johanns said the U.S. team came to the negotiations with a great deal of flexibility and willingness to reduce farm subsidies that distort trade. "Unfortunately," Schwab said, "most of our trading partners showed up with exactly the same positions as they had two, three weeks ago when the last set of Doha Round negotiations hit the skids." The breakdown in trade negotiations will play a big role in development of the 2007 farm bill. Secretary Johanns has stated that the new bill would focus on improving international trade and market access for U.S. commodities, likely meaning reductions in domestic farm subsidies. But if other nations are unwilling to negotiate their own subsidies and other trade barriers, pressure to maintain supports here will grow. Already, several members of Congress are calling for a one-year extension of the current farm bill. **Source—Drovers Alert, Thursday, July 27, 2006, Vol. 7, Issue 30**

WESTERN RANCHERS JOIN LAWSUIT TO DEFEND GRAZING REGULATIONS

The Public Lands Council, an organization of public-lands ranchers throughout the West, has joined in a lawsuit to help defend the final grazing regulations issued by the Bureau of Land Management. The PLC represents the National Cattlemen's Beef Association, the American Sheep Industry and the Association of National Grasslands. Upon publication on July 12, the Western Watersheds Project immediately filed a lawsuit in federal district court in Idaho to block the regulations. A second suit was also filed by the National Wildlife Federation, the Natural Resources Defense Council, the Idaho Conservation League and the Idaho Wildlife Federation. **Source—Drovers Alert, Thursday, July 27, 2006, Vol. 7, Issue 30**

FAWN—DESOTO COUNTY ANNUAL RAINFALL

| JAN | FEB | MAR | APR | MAY | JUN | JULY | AUG | SEPT | OCT | NOV | DEC | Total |
|--------------|--------------|--------------|--------------|--------------|--------------|--------------|------------|-------------|------------|------------|------------|---------------|
| 0.32" | 3.26" | 0.97" | 0.14" | 2.07" | 2.71" | 5.84" | | | | | | 15.31" |

This information comes from our FAWN site located behind the Extension Office. You can access this information from our website by scrolling down and clicking on [FAWN](#). The website is: <http://desoto.ifas.ufl.edu/>. You might find it of interest that on July 30, 2006 at 10:15 PM we recorded winds speeds of 87.35 mph and at 11:00 PM wind speeds of 146.11 mph. I don't know if this was an abnormality in the recording or if there possibly were tornados in the vicinity.

SUNBELT AGRICULTURAL EXPOSITION, MOULTRIE, GA.

For those who have never attended the Sunbelt Expo. in Moultrie, I would encourage you to consider attending this year. Hours for the Sunbelt Expo are 8:30 a.m. until 5 p.m. on Tuesday and Wednesday and 8:30 a.m. until 4 p.m. on Thursday. Cost of admission is \$6.00 per person per day. The mission of the Expo is: "To produce the Premier Farm Show in the World; one that is conducive to trade and emphasizes information, education and implementation of the latest agricultural technology, research and equipment." All kinds of farm and ranch equipment is exhibited and in many cases demonstrated. I am interested in how many people might be interested in attending if transportation was available such as a bus to transport up and back. If you are interested either e-mail me at jimself@ufl.edu or call (993-4846) the office and let us know. **Jim**

NACAA 2006 TOUR—ALTERNATIVE LIVESTOCK

Last week, I attended the National Association of County Agricultural Agents Annual Meeting and Professional Improvement Conference in Cincinnati Ohio. On Wednesday, we conduct agricultural tours and I selected and attended the Alternative Livestock. There were four farm/ranch stops that included Goats, Free Range Turkeys, Llama/Alpacas, and Elk. In almost all states, the numbers of operations raising goats is increasing due to the demand for this meat source from different ethnic groups. Llamas and Alpacas are being raised for their wool and to some degree as companion animals. The Llama/Alpaca do not appear to me to be economically feasible at this time with breeding animals selling for \$30,000-50,000. The free ranging turkey was a niche market that they processed and marketed directly to the public. Both the goats and free ranging turkeys used a breed of guard dog called the Great Pyrenees. The pictures below are some that I took of the different operations. I thought you might enjoy seeing them.



Beef Management Calendar

August/September

Control Smutgrass with Velpar if there is adequate soil moisture.

Check dustbags, oilers, etc.

Treat for liver flukes as close to August 15th as possible.

Check pastures and hay fields for armyworms.

Check mineral feeder.

Revaccinate calves at weaning for blackleg.

Wean calves and cull Cow Herd.

Pregnancy check cows.

If cattle grubs were found on cattle last winter or heel flies were observed in the pasture, treat for cattle grubs in August.

Determine bull replacement needs, develop selection criteria, and start checking availability of quality animals.

Heavily graze pastures to be inter-planted to cool season pastures.

Pregnancy test and cull open heifers from replacement herd.

James F. Selph
DeSoto County Extension Director, IV, Livestock

Participating Agents and Specialist

- Jim Selph – DeSoto County
863/993-4846
- Dr. Bill Giuliano-Wildlife Ecology and Conservation Department
352/846-0575
- Robert Halman – Collier County
239-353-4244
- Lockie Gary – Hardee County
863/773-2164
- Gary Mikulecky – Highlands County
863/402-6540
- Christa Carlson – Manatee County
941/722-4524
- Pat Hogue/Pat Miller – Okeechobee County
863/763-6469
- Brantley Ivey– Polk County
863/519-8677
- Sonja Crawford– Hendry County
863/674-4092
- Shelley Humphries – Glades County
863/946-0244
- Steffany Dragon/Brent Broaddus – Hillsborough County
813/744-5519

Registration Form

Name: _____
 Address: _____
 City: _____
 Phone #: _____
 E-Mail: _____
 Number Attending: _____
 Payment Amount: \$ _____

For information, including registration, contact Dr. Bill Giuliano, UF/IFAS Department of Wildlife Ecology and Conservation, 352-846-0575 or Jim Selph, DeSoto County Extension Director, 863-993-4846.

This program is designed to educate landowners, managers, and hunters on the ecology and management of Deer and Turkey in Florida. The science-based information will come from a variety of sources, including landowners, the hunting industry, academia, NGO's, and natural resource agencies, and be presented in layperson terms.

Advanced Registration: **\$50.00**
 Late Registration after 8/11/06: **\$75.00**
Make Payment to: South Florida Beef Forage Program
Mail Registration and Payment to: DeSoto County Extension, PO Box 310, Arcadia, Florida, 34266
Website Information:
[http://desoto.ifas.ufl.edu/Wildlife and Conservation/wildlife_and_conservation.htm](http://desoto.ifas.ufl.edu/Wildlife_and_Conservation/wildlife_and_conservation.htm)

Cooperators:

UF/IFAS Dept. of Wildlife Ecology & Conservation
 South Florida Beef Forage Program
 FWC

LODGING AVAILABLE AT:
HOLIDAY INN EXPRESS 863-494-5900



UNIVERSITY OF FLORIDA

IFAS EXTENSION

**1st Annual Deer/
 Turkey Management
 Shortcourse**

Turner Center Annex
 Arcadia, Fl

August 18, 2006



SOLUTIONS
 for your LIFE

Agenda

Presiding: Jim Selph

7:45 Registration & coffee

8:00 Welcome & Introductions—Jim Selph & Bill Giuliano

Turkey Ecology, Management, & Issues

8:05 Turkey Facts: Brian Zielinski - Biologist, National Wild Turkey Federation

8:25 Turkey Habitat Management: Lovett Williams - Biologist and Owner, Real Turkeys

8:55 Supplemental Feeding and Food Plots for Turkeys: Brian Zielinski - Biologist, National Wild Turkey Federation

9:15 Harvest Management and its Effects on Turkeys: Larry Perrin - Turkey Program Coordinator, Florida Fish and Wildlife Conservation Commission

9:45 Break



Deer Ecology, Management, & Issues

10:00 Deer Facts: Robert Vanderhoof - Deer Program Coordinator, Florida Fish and Wildlife Conservation Commission

10:20 Deer Habitat Management: Steve Shea - Biologist, St. Joe Company

10:50 Supplemental Feeding and Food Plots for Deer: TBA

11:10 Quality Deer Management: David Guynn - Professor, Clemson University

11:40 Harvest Management and its Effects on Deer: Robert Vanderhoof - Deer Program Coordinator, Florida Fish and Wildlife Conservation Commission

12:10 Q&A with Speakers

12:30 Lunch

1:30 Field/Site Visit and Meeting with Managers and Speakers at a local Ranch

Corporate Sponsors **Gulf Coast Tractor and Equipment**



National Wild Turkey Federation



WAL*MART®
ALWAYS LOW PRICES. *Always.*

Of Arcadia

COOPERATIVE EXTENSION SERVICE, UNIVERSITY OF FLORIDA, INSTITUTE OF FOOD AND AGRICULTURAL SCIENCES, Larry R. Arrington, Director, in cooperation with the United States Department of Agriculture, publishes this information to further the purpose of the May 8 and June 30, 1914 Acts of Congress; and is authorized to provide research, educational information and other services only to individuals and institutions that function with non-discrimination with respect to race, creed, color, religion, age, disability, sex, sexual orientation, marital status, national origin, political opinions or affiliations.