



UNIVERSITY OF
FLORIDA

IFAS EXTENSION

DeSoto County Beef Newsletter

2150 NE Roan Street, Arcadia, FL 34266



Don't forget to register for the
Cattlemen's Convention &
Allied Trade Show

May 2006 / Volume 28 Number 5

CALENDAR OF EVENTS

May

3-5	55 th Annual Florida Beef Cattle Shortcourse, Hilton UF Conference Center, Gainesville, FL
-----	---

June

19-20	Florida Cattlemen's College, Marco Island Marriott, Marco Island
-------	--

20-22	Florida Cattlemen's Convention and Allied Trade Show, Marco Island Marriott, Marco Island
-------	---

U.S. TO KILL ENTIRE FLOCKS IF BIRD FLU FOUND

USDA officials announced that if avian influenza is found in U.S. chickens or turkeys, the government will kill any flocks suspected of having the virus -- before testing is complete, *The Associated Press* (AP) reported. "Quick detection will be key to quickly containing it and eradicating it," Ron DeHaven, head of USDA's Animal and Plant Health Inspection Service, told the AP. Most of the chickens raised in the U.S. are housed in commercial facilities that are protected against the spread of disease. But, there are several backyard and free-range flocks that are harder to protect. Officials are encouraging owners to bring flocks inside and watch for signs of flu and report them to state or federal authorities. USDA is testing as many as 100,000 wild birds this year and the industry is testing every commercial flock for the flu virus. **Source—Cow Calf Weekly, April 21, 2006**

SOUTH KOREA SENDS EXPERTS ON FACT-FINDING MISSION TO U.S.

South Korea sent a fact-finding team to the U.S. on Wednesday to verify the age of the cow found infected with BSE in Alabama. The cow was the second native-born case found in the U.S. U.S. officials say that, based on photos of the animal's teeth, it was born before the feed ban took effect in April 1998, but they haven't been able to confirm the animal's actual age. "Despite the assessment by experts here who saw the photos' of the animal's teeth from various angles, the team will be sent to check the remains," said Kim Chang-seob, the ministry's chief veterinary officer. South Korea has been in discussions with U.S. officials over when they will resume imports of U.S. beef. They plan to send several teams to the U.S. in May to inspect 33 processing plants that applied for export certification to South Korea. If all goes well, the first imports of U.S. beef are expected into the country around early June. **Source—Cow Calf Weekly, April 21, 2006**

HOUSEHOLD INCOME FOR FARMS DEPENDS ON OUTSIDE SOURCES

A majority of household income for farms comes from outside sources, according to a USDA report. Off-farm sources of income — including employment earnings, business activities and investments — provided 85 percent to 95 percent of total household income for all farms between 1999 and 2003. **Source—Drovers Alert, Thursday, April 13, 2006, Vol. 7, Issue 14**

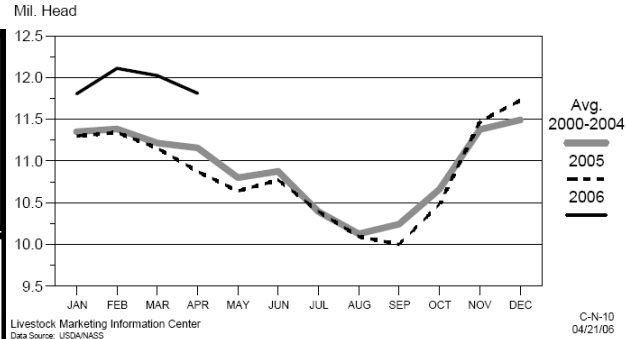
The Institute of Food and Agricultural Sciences (IFAS) is an Equal Opportunity Institution authorized to provide research, educational information and other services only to individuals and institutions that function with non-discrimination with respect to race, creed, color, religion, age, disability, sex, sexual orientation, marital status, national origin, political opinions or affiliations. U.S. Department of Agriculture, Cooperative Extension Service, University of Florida, IFAS, Florida A. & M. University Cooperative Extension Program, and Boards of County Commissioners Cooperating.

MARKET INFORMATION

April 24, 2006

This Week Last Week Last Year

CATTLE ON FEED US Total, Monthly



This chart gives an indication of where we currently at with cattle on feed. This year is well ahead of the last 5

http://www.ams.usda.gov/mnreports/SJ_LS712.txt

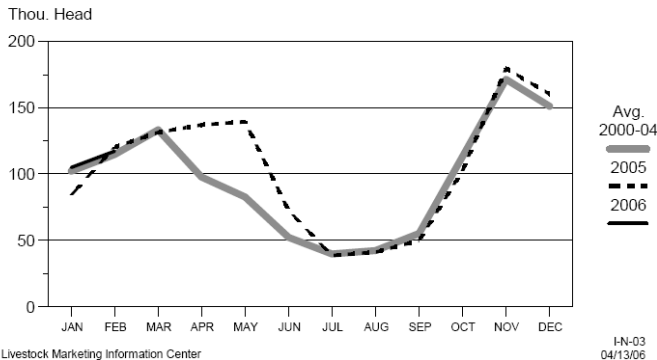
BEEF PRODUCTION	(Estimate)	(Estimate)	(Actual)
Slaughter	621,000	608,000	600,000
Live Weights	1258	1265	1221
Dressed Weights	768	773	745
Beef Production (mil lbs)	474.8	468.1	444.7

http://www.ams.usda.gov/mnreports/lm_ct150.txt

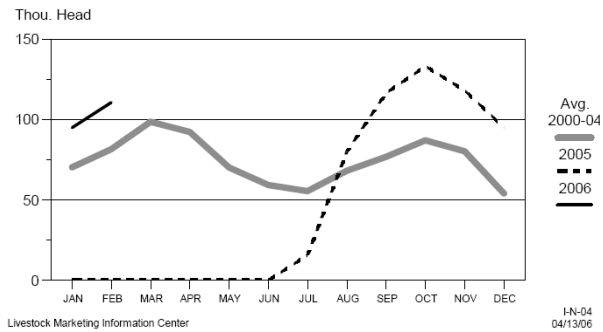
5 AREA WEEKLY WEIGHTED CATTLE PRICE

Live Steer	82.34	84.07	93.86
Live Heifer	82.24	84.13	93.96
Dressed Steer	132.18	132.98	149.73
Dressed Heifer	131.27	133.20	149.46

U S CATTLE IMPORTS FROM MEXICO Monthly



U S CATTLE IMPORTS FROM CANADA Monthly



The summary below reflects the week ended April 21, 2006 for Medium and Large 1 -- 500- to 550-lb., 600- to 650-lb., and 700- to 750-lb. heifers and steers. **Source: Beef Stocker Trends, April 25, 2006.**

State	Volume	Steers			Heifers		
		500-550 lbs.	600-650 lbs.	700-750 lbs.	500-550 lbs.	600-650 lbs.	700-750 lbs.
Calf Weight							
TX	23,600	\$123.17	\$110.52	\$106.82	\$115.74	\$103.51	\$96.28
AL	7,500	\$120-125	\$112-120		\$113-121	\$100-110	\$90-92
TN	9,400	\$121.26	\$106.50	\$95.14	\$110.95	\$97.84	\$88.28
FL	4,400	\$110-119	\$110-113		\$100-116	\$94-99	
GA	9,100	\$105-124	\$98-110	\$87-94	\$101-120	\$90-110	\$83-93



CORN:

Kansas City US No 2 rail White Corn was 1 cent lower to 3 cents higher from 2.44-2.49 bushel. US No 2 truck Yellow Corn was steady at 2.16 per bushel. Omaha US No 2 truck Yellow Corn was steady to 2 cents higher from 2.06-2.08 per bushel. Chicago US No 2 Yellow Corn was 1/2 cent higher from 2.14 3/4-2.23 3/4 per bushel. Toledo US No 2 rail Yellow corn was 1 1/2 cents higher from 2.13 3/4-2.19 3/4 per bushel. Minneapolis US No 2 Yellow Corn rail was 2 1/2 cents higher at 2.05 3/4 per bushel. **Source: USDA Weekly National Grain Market Review, Friday April 21, 2006**
http://www.ams.usda.gov/mnreports/SJ_GR851.txt

AFTER A GOOD START, 2006 SOFTENING FOR FEEDLOTS

The years 2002-2005 were generally profitable for cattle feeders, says Dillon Feuz at www.lmic.info. The University of Nebraska economist says 2006 will likely be much different, with losses some weeks possibly exceeding \$150/head. How do these returns compare to historical returns? Feuz modeled weekly feedlot returns for Nebraska based on average

The Institute of Food and Agricultural Sciences (IFAS) is an Equal Opportunity Institution authorized to provide research, educational information and other services only to individuals and institutions that function with non-discrimination with respect to race, creed, color, religion, age, disability, sex, sexual orientation, marital status, national origin, political opinions or affiliations. U.S. Department of Agriculture, Cooperative Extension Service, University of Florida, IFAS, Florida A. & M. University Cooperative Extension Program, and Boards of County Commissioners Cooperating.

Nebraska feeder cattle prices and Nebraska fed cattle prices. For the 2000-2002 period, Feuz estimates feedlots averaged a \$40/head loss. During the 4th quarter of 2001 and the 1st quarter of 2002, losses averaged \$115/ head, with one week seeing losses of more than \$200/head. In contrast, he estimates average profits were \$80/head sold from 2002-2005. Feuz says feedlots found the first few weeks of 2006 profitable but returns have been negative since February. At current fed-cattle price levels, he estimates losses of about \$90/head. If cash prices follow the CME Live Cattle board and decline into the mid-to upper-\$70s in the next couple of months, he says losses likely will average more than \$125/head. Feeder prices have declined some in recent weeks, but Nebraska feedlots may not generate positive returns until the 4th quarter of 2006, he adds. **Source—Beef Stocker Trends, April 18, 2006**

ENERGY PRICES PUT MORE ACRES IN SOYBEANS

USDA's 2006 "Prospective Plantings" estimates projects U.S. farmers will plant record soybean acres and fewer corn acres this year. Soybeans are expected to claim 76.9 million acres in 2006, up 7% from 2005. Large increases are expected in the Corn Belt, including 600,000 more acres in Illinois, and 500,000 more acres in Indiana. Meanwhile, corn plantings are expected on 78 million acres in 2006, down 5% from 2005. This would be the lowest corn acreage since 2001. In addition, wheat is expected to total 57.1 million acres, down slightly from 2005. This will be the lowest wheat acreage since 1972. USDA says farmers are switching from corn to less input intensive crops due to high fertilizer and fuel costs. **Source—Beef Stocker Trends, April 18, 2006**



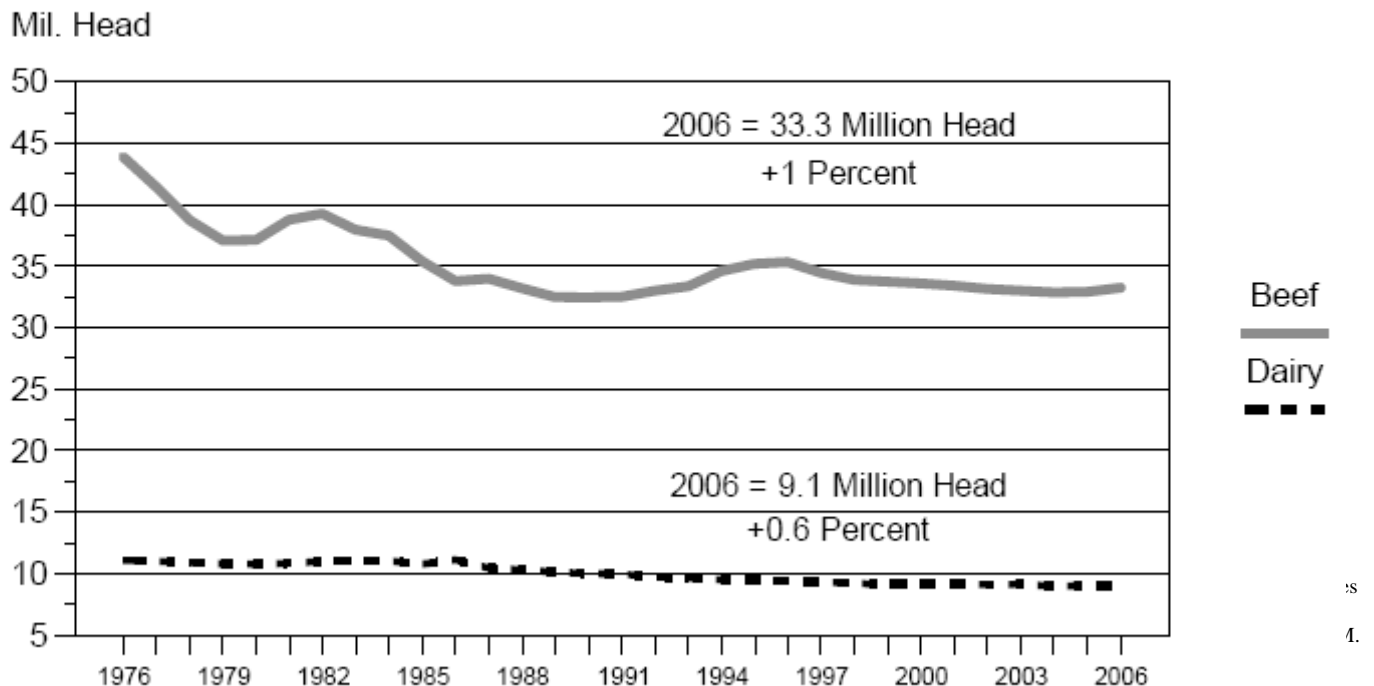
IMPLEMENTATION PLAN CONFIRMS USDA'S ID COMMITMENT

Last week, USDA Secretary Mike Johanns released an implementation plan that included timelines and benchmarks for the National Animal Identification System (NAIS). It's newsworthy only in the respect there had been a lot of concern regarding what USDA was actually doing in the ID and traceback arena, and whether the agency had undergone a change of heart. The implementation plan essentially only reaffirmed 2009 as the target date for 100% NAIS compliance, and that USDA hasn't changed its initial plan or views. The private initiatives that have been advancing now appear to be the clear leaders, and the next step is simply moving producers to participate. While other players may emerge, the U.S. Animal Identification Organization (USAIO) appears to be the clear-cut leader. **Source—Cow-Calf Weekly, April 14, 2006**

FMD THREATENS 18 MILLION CATTLE IN EGYPT

Already in a countrywide battle against avian influenza, Egyptian officials report thousands of Egyptian cattle are infected with foot-and-mouth disease (FMD). An *Egyptian Gazette* article reports eight governorates have thus far found FMD disease. The first cases were announced in March. The disease threatens an estimated 18 million livestock, according to the Veterinary Services Authority, affiliated to the Ministry of Agriculture, the article says. **Source—Cow-Calf Weekly, April 14, 2006**

JANUARY 1 COW INVENTORY
U.S., Annual



INFORMATION SOURCES FOR BUILDING PLANS FOR CORRALS, BARNS, ETC.

- * **Corrals For Handling Beef Cattle**--This book features information on cattle behavior, handling techniques, corral design corral geometry and corral components. Cost is \$10 and can be purchased by calling (780) 427-0391. [http://www1.agric.gov.ab.ca/\\$department/deptdocs.nsf/all/agdex27?opendocument](http://www1.agric.gov.ab.ca/$department/deptdocs.nsf/all/agdex27?opendocument)
- * **Beef Housing and Equipment Handbook, Fourth Edition**—This Handbook covers farmstead planning, building construction and materials, ventilation, cow-calf and cattle feeding facilities, feed storage processing and handling, water and waterers, utilities, manure management, and fences and gates. The cost is \$15 & can be ordered from the Midwest Plan Service at 1-800-562-3618. <https://www.mwpshq.org/catalog.html>
- * **Horse Facilities Handbook**—This Handbook includes topics on site planning; design and construction of stables, paddocks, and other outdoor and indoor facilities; manure management; storage; fencing; utilities; and fire protection. Cost is \$35 and it also is available from from the Midwest Plan Service at 1-800-562-3618. <https://www.mwpshq.org/catalog.html>
- * **Farm Building Plans**---These building and facility plans were developed over many years by engineers at Land Grant universities. They provide conceptual information that is excellent for planning purposes. The plans were prepared through the USDA Cooperative Farm Buildings Plan Exchange. Cost is \$5 for the first page, \$2 for each additional page. They can be ordered at the following website: <http://www.cerc.colostate.edu/Blueprints/Farmbuildings.htm>
- * **Dr. Temple Grandin's Webpage:** An excellent source of information is the following website: <http://www.grandin.com/> Dr. Grandin is a designer of livestock handling facilities and an Associate Professor of Animal Science at Colorado State University.

FLORIDA CATTLEMEN'S ASSOCIATION CATTLEMEN'S COLLEGE

This year at the Florida Cattlemen's Association Annual Convention and Allied Trade Show, there will be a Cattlemen's College held for the 1st time. It will begin on Monday afternoon at 1:00 PM and last till 4:00 PM. The second half will be on Tuesday morning from 8:30 AM till 11:30 AM. The following topics will be presented:

- * 1:00-2:30 PM—"USDA Conservation Programs for Florida Ranchers"-Greg Hendricks & Pete Deal, USDA/NRCS---2:30-3:00—Questions and answers
- * 3:00-4:30 PM—"Market Update and Forecast "--Kevin Good, Cattle Fax, Denver CO—4:30-5:00—Questions and answers
- * 8:00-11:30 AM—"Advancements to Improve Reproductive Performance"--Dr. Daniel W. Scruggs, Pfizer Animal Health----"Matching E.P.D.'s with your Cowherd Needs"
Breed Representatives: David Gazda, American Angus Association
Robert Williams, American Charolais Association
Dr. Don Smith, Florida Brangus Breeders,

Beef Management Calendar

May/June

Remove Bulls.

Fertilize warm season pastures.

Check mineral feeder.

Apply Spot-On Agent for Grubs and Louse.

Vaccinate and Implant (except for replacement heifers) any late calves.

Reimplant calves at 90 to 120 days with growth stimulant.

Get heifers vaccinated for brucellosis if not already done.

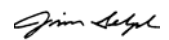
Pregnancy check cows.

Watch for evidence of pinkeye and treat.

Plant warm season perennial pastures.

Make plans to attend the Beef Cattle Short Course.

Make plans to attend the FCA Convention.



James F. Selph
DeSoto County Extension Director, IV, Livestock

