



**UNIVERSITY OF
FLORIDA**

IFAS EXTENSION

**DeSoto County
Beef Newsletter**

2150 NE Roan Street, Arcadia, FL 34266



**Sign up now to attend the
2006 Grazing Management
School September 27-28**

September 2006 / Volume 28 Number 9

CALENDAR OF EVENTS

September

| | |
|--------------|--|
| 20-22 | FCA Fall Quarterly, Sarasota Cay Resort 7150 N. Tamiami Trail, Sarasota, FL |
| 27-28 | 2006 Grazing Management School, Hardee County Agri-Civic Center, Wauchula |
| 29 | FCA 12th Annual Quality Heifer Sale, Arcadia Stockyards, Arcadia |

October

| | |
|--------------|--|
| 5 | DeSoto/Charlotte Farm Bureau Annual Meeting, 6:30 PM DeSoto Middle School |
| 6 | Black Brangus Bull Sale, Arcadia Stockyards, Arcadia |
| 5-6 | 2nd Annual Quail Management Shortcourse, Willow Pond, Monticello's Rustic Conference Center and Plantations in the Jefferson County Vicinity—Pre-registration \$60 |
| 11 | Pasture Weed Day, 9:00 AM – 1:30 PM at pasture located south of Limestone on CR 661, approximately .2 mile north of DeSoto/ Hardee Line |
| 17-19 | Sunbelt Agricultural Exposition, Moultrie, Ga. |
| 24 | Ona Range Cattle Research and Education Center Field Day, 9:00 AM—3:00 PM, Steak Dinner |
| 26 | DeSoto County Cattlemen's Annual Meeting, 7:00 PM, Turner Center Exhibit Hall |

PASSING OF DR. MARTIN ADJEI

On August 15, 2006, Dr. Martin Adjei, was killed in a tragic automobile accident on his way home for work. Dr. Adjei was an Associate Professor and Forage Extension Specialist. Many in the livestock industry knew Martin for his work in transferring research information on pasture insect bio-controls to producers. This was most notably in the area of mole cricket control on bahiagrass pastures. Martin is survived by his wife Gloria (Elementary teacher at Nocatee) and two children, Daniel and Ohenewa, along with his mother Mary Adjei and a number of extended family members. Dr. Adjei will be missed by his colleagues and the Florida Cattle Industry.



MARKET INFORMATION

August 31, 2006

| | 8/28/06 | Last Week | Last Year |
|--|---------|-----------|-----------|
| 5 AREA WEEKLY WEIGHTED CATTLE PRICE | | | |
| Live Steer | 87.54 | 85.59 | 81.70 |
| Live Heifer | 87.64 | 85.66 | 81.86 |
| Dressed Steer | 137.17 | 135.88 | 128.86 |
| Dressed Heifer | 137.75 | 135.84 | 128.67 |

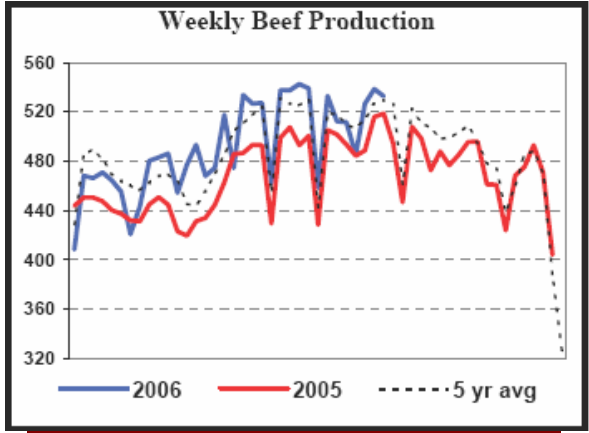
http://www.ams.usda.gov/mnreports/lm_ct150.txt

| | 8/28/06 | Last Week | Last Year |
|--------------------------------|------------|------------|-----------|
| BEEF PRODUCTION | (Estimate) | (Estimate) | (Actual) |
| Slaughter | 683,000 | 692,000 | 665,000 |
| Live Weights | 1275 | 1273 | 1271 |
| Dressed Weights | 783 | 781 | 784 |
| Beef Production (M. of Pounds) | 532.7 | 538.6 | 518.8 |

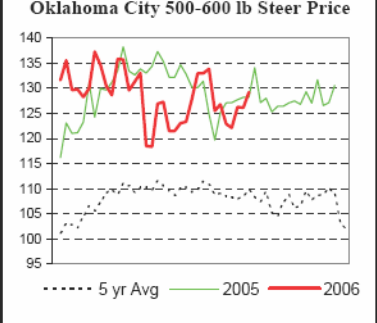
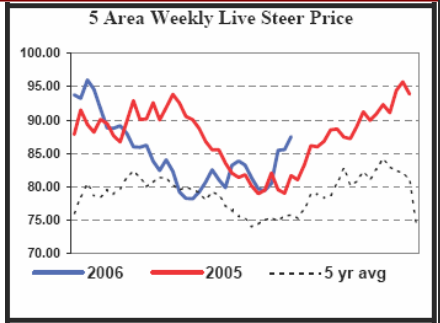
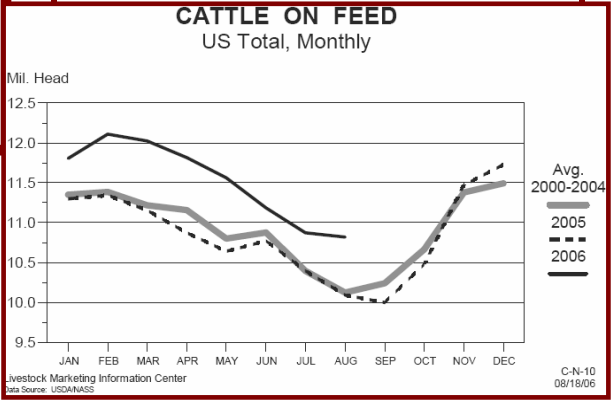
http://www.ams.usda.gov/mnreports/SJ_LS712.txt

| | 8/128/06 | Last Week | Last Year |
|---------------------------------|----------|-----------|-----------|
| National Grading Percent | | | |
| Prime | 2.52% | 2.53% | 2.95% |
| Choice | 50.52% | 52.08% | 54.99% |
| Select | 38.84% | 37.72% | 36.30% |

http://www.ams.usda.gov/mnreports/NW_LS196.txt



Choice/Select Spread
8/29/06
\$9.46/cwt
http://www.ams.usda.gov/mnreports/lm_x_b403.txt



The summary below reflects the week ended August 25, 2006 for Medium and Large 1 -- 500- to 550-lb., 600- to 650-lb., and 700- to 750-lb. heifers and steers. **Source: Beef Stocker Trends, August 29, 2006.**

| State | Volume | Steers | | | Heifers | | |
|-------|--------|--------------|--------------|--------------|--------------|--------------|--------------|
| | | 500-550 lbs. | 600-650 lbs. | 700-750 lbs. | 500-550 lbs. | 600-650 lbs. | 700-750 lbs. |
| TX | 33,100 | \$118.00 | \$113.45 | \$106.74 | \$111.53 | \$103.77 | \$106.43 |
| AL | 16,400 | \$115-123 | \$108-115 | \$102-106 | \$108-116 | \$102-108 | \$94-103 |
| TN | 9,900 | \$118.60 | \$111.92 | \$106.15 | \$110.13 | \$102.41 | \$97.81 |
| FL | 9,100 | \$96-118 | \$96-108 | \$97-103 | \$94-112 | \$88-102 | \$87-96 |
| GA | 8,700 | \$103-123 | \$99-114 | \$93-107 | \$100-116 | \$92-105 | \$89-94 |



CORN:

Corn had very good export announcements this week and weekly export figures were positive. Everyone is estimating another bumper corn crop this year but exports have prices well above a year ago even with the huge carry over from last year's colossal production. Corn supplies are not going to come up short anytime soon but ethanol plants are sprouting up like weeds throughout the entire Mid-West. Agricultural exports have been a Godsend to our export-import deficits. Sorghum out did corn and did not follow the usual price pattern. A large percentage of this commodity is usually grown in the dry land, non-irrigated, areas of the southwest and drought conditions really hit this part of the country hard this year. In many instances, especially livestock feed, sorghum is a good substitute for corn.

Source: USDA Weekly National Grain Market Review, Friday August 25, 2006

The Institute of Food and Agricultural Sciences (IFAS) is an Equal Opportunity Institution authorized to provide research, educational information and other services only to individuals and institutions that function with non-discrimination with respect to race, creed, color, religion, age, disability, sex, sexual orientation, marital status, national origin, political opinions or affiliations. U.S. Department of Agriculture, Cooperative Extension Service, University of Florida, IFAS, Florida A. & M. University Cooperative Extension Program, and Boards of County Commissioners Cooperating.

2006 GRAZING MANAGEMENT SCHOOL

The 2006 Grazing Management School is scheduled for September 27th and 28th at the Hardee County Agricultural Civic Center in Wauchula, FL. This course is sponsored by The South Florida Beef-Forage Program of the University of Florida, Cooperative Extension Service. It is conducted with the volunteer assistance of area livestock producers and Allied Industries. Registration fee for this two day school is \$60.00 if returned by Sept 15, 2006, and \$80.00 if returned after Sept. 15, 2006. See the attached brochure for in-depth information.

2006 FLORIDA CATTLEMEN'S ASSOCIATION STATE HEIFER SALE

The 14th Annual Florida Cattlemen's Association State Heifer Sale is returning to DeSoto County this year at the Arcadia Stockyards on Friday, September 29, 2006.

PASTURE WEED DAY

Wednesday, October 11, 2006 from 8:30 AM till 1:30 PM we will be having a Pasture Weed Day beginning at 8:30 AM in a pasture on CR 661, .2 mile north of the DeSoto/Hardee County Line. After the program and demonstrations are over we will travel to the Ona Range Cattle Station and have lunch. We will need to know how many people we will be serving for lunch. Please contact Andrea Dunlap at (863) 735-1314 or email her at asdunlap@ufl.edu. A \$10 per person registration fee, made payable to the South Florida Beef Forage Program, may be sent directly to Andrea Dunlap, 3401 Experiment Station, Ona, FL 33865. See the attached brochure for more information.

2006 ONA RANGE CATTLE RESEARCH AND EDUCATION CENTER FIELD DAY

The Ona Range Cattle Research and Education Center has announced this year's date for its annual field day. That date will be October 24, 2006 at the center and will begin with registration and coffee at 8:00 AM. This year's field day is dedicated to the memory of Dr. Martin Adjei. The program will begin at 9:00 AM and conclude at 3:00 PM. A steak lunch is provided. Please RSVP by October 13 by calling Andrea Dunlap at 863-735-1314 or E-mail: asdunlap@ifas.ufl.edu. The following topics will be included in this year's field day: Pasture weed management, Perennial peanuts for drier flatwood soils, Overview of forage management considerations and Evaluation of Angus genotypes derived from northern and southern climates.

DESOTO COUNTY CATTLEMEN'S ASSOCIATION ANNUAL MEETING

The 2006 DeSoto County Cattlemen's Association Annual Meeting will be held at 7:00 p.m., Thursday, October 26, 2006, at the Turner Center Exhibit Hall. All members, along with their family are invited to attend. Members are asked to bring a covered dish. You may bring one guest to the steak dinner. Members bringing more than one guest will be asked to pay \$10.00 per each additional guest. Not only will you be able to enjoy an excellent steak dinner by attending, you will also hear excellent information concerning beef cattle production and most of all you will have a great time socializing with your friends.

FAWN—DESOTO COUNTY ANNUAL RAINFALL--<http://desoto.ifas.ufl.edu/>.

| JAN | FEB | MAR | APR | MAY | JUN | JULY | AUG | SEPT | OCT | NOV | DEC | Total |
|-------|-------|-------|-------|-------|-------|-------|-------|------|-----|-----|-----|--------|
| 0.32" | 3.26" | 0.97" | 0.14" | 2.07" | 2.71" | 5.84" | 9.30" | | | | | 24.61" |

SUNBELT AGRICULTURAL EXPOSITION, MOULTRIE, GA.

For those who have never attended the Sunbelt Exposition in Moultrie, Ga., I would encourage you to consider attending this year. Hours for the Sunbelt Expo are 8:30 a.m. until 5 p.m. on Tuesday and Wednesday and 8:30 a.m. until 4 p.m. on Thursday. Cost of admission is \$6.00 per person per day. The dates are October 17, 18 and 19. I have only had 1 individual who has shown an interest in attending as part of a group.

CANADA CONFIRMS NEW BSE CASE

Canadians confirmed an eighth case of BSE in that country last Wednesday, this one in a mature cow they believe was either born just before the ban on feeding mammalian protein or during the program's early stages. A day later, the Canadian Food Inspection Agency (CFIA) completed its investigation into the seventh BSE case there -- confirmed July 13 -- in a cow born after the ban. As to the completed investigation, CFIA officials say: "A particular incident was documented in one commercial feed facility that may have permitted the contamination of a single batch of cattle feed with prohibited material. The entire batch of feed was shipped to the BSE-positive animal's farm. While the investigation looked at all possible routes of exposure, this particular batch of feed is the most probable source of infection. The CFIA has launched an enforcement investigation." [Source: Beef Stocker Trends, August 29, 2006.](#)

2nd ANNUAL QUAIL MANAGEMENT SHORTCOURSE

The 2nd Annual Quail Management Shortcourse will be held October 5-6, 2006 in Monticello. Contact the DeSoto County Extension Office, 993-4846, if you would like a copy of the program and registration information. Advanced registration cost is \$60 and \$75 at the door. The program information is also available on our website.

Beef Management Calendar

September/October

| | |
|--|---|
| Cut Hay. | Check dustbags, oilers, etc. |
| Heavily graze pastures to be interplanted to ryegrass. | Check pastures and hay fields for armyworms. |
| Check mineral feeder. | Revaccinate calves at weaning for blackleg. |
| Wean calves and cull Cow Herd. | Pregnancy check cows. |
| September and October is a good time to deworm the cow herd if internal parasites are a problem. | Determine bull replacement needs, develop selection criteria, and start checking availability of quality animals. |
| Watch condition of the cow herd and maintain adequate nutrition. | Pregnancy test and cull open heifers from replacement herd. |

Results from 2005 Beef Audit Identify Three Quality-Control Successes

Initial results from the National Beef Audit 2005, funded in part by beef checkoff investments in the Beef Quality Assurance Program, provide U.S. beef and dairy producers as beef producers insight into beef quality successes and future challenges. Identified in the audit were the top three quality successes since the 2000 audit: improved microbiological safety, improved cattle genetics and beef of higher quality, and fewer injection-site lesions. Lack of uniformity/consistency in quality was ranked by end-users as the No. 1 defect in the U.S. beef industry. That lack was further defined by four things: (presence) of marbling; tenderness; palatability; and inconsistency among and within quality grades. The rankings are from interviews with beef end-users including exporters, purveyors, foodservice and retail channels. The beef audit is conducted every five years and is part of the Beef Quality Assurance Program. Program training materials used to help certify trained producers in quality pre-harvest practices in 47 states are funded by the beef checkoff. **Source—Beef Briefs. Beef Checkoff News for Dairy Producers—August 29, 2006.**

JOHANNSS ASSURES CONFIDENTIALITY OF NAIS

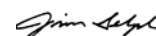
U.S. Agriculture Secretary Mike Johanns told those attending the National Animal ID Info Expo on Wednesday that information collected through the National Animal Identification System will be kept confidential and used only in the event of a disease outbreak. Johanns said private vendors would collect and maintain the data, making it off-limits to federal open-records laws. "It is not data that is controlled and owned by USDA, so we can protect confidentiality," he said. **Source—Drovers Alert, Thursday, August 24, 2006, Vol. 7, Issue 34.**

FCA FALL QUARTERLY MEETING

Due to Hurricane Ernesto, the FCA Fall Quarterly meeting will be held September 20-22, 2006 at the Sarasota Cay Resort 7150 N. Tamiami Trail, Sarasota, Fl. The general session is a 1:00 PM with committee meetings at 1:45 PM. The Florida Cattlemen's Steak Out will be held at 6:00 PM at the Sarasota County Fairgrounds. It is being hosted by: Sarasota County Cattlemen's & Cattlewomen.

U. S. HOUSE BILL—HR 503

A bill in Congress would, in effect, forbid the sale of an animal for slaughter -- violating the owner's right of private property -- based not on science, food safety or humane grounds but strictly on the emotional plea that some don't want animals slaughtered for food. A precedent here could have catastrophic consequences for all animal food production. This bill (H.R. 503) in the U.S. House has over 200 co-sponsors, very close to the number required for passage. Last session's bill to pull federal funding for horse slaughter inspection did pass, despite the livestock industry's belief prior to the vote that they had the votes to defeat it. This issue highlights something the livestock industries must come to grips with. The public increasingly views production animal agriculture with the same attitude it views the critter sitting next to them on the couch -- a dog or cat they consider "family." This blurring of the line between humans and animals -- silly and incomprehensible to cattlemen who handle production livestock every day -- poses a potentially fatal threat to livestock production. **Source-- AFF Sentinel Vol.3 #23-Battlefields—August 30, 2006.**



James F. Selph

DeSoto County Extension Director, IV, Livestock

Hard to Control Weeds

Are you battling tropical soda apple? Dogfennel? Blackberry? Cogongrass? Is there any herbicide that controls soda apple and dogfennel with one pass through the pasture?

These are all questions we answer, especially with the new herbicides Milestone and Forefront. Simply stated, what are the best options for weed control in pastures?

That is a challenging question, and it will depend on the particular weed species, the environment, weed age and size, as well as time of year.

Who Should Attend?

- Ranchers
- Herbicide Applicators
- Extension Educators
- Anyone who wants to learn more about weed control in pastures

Program

8:30
Arrive at Pasture (See Map)

9:00
Opening Welcome & Address

9:10
Tour

- Forefront and Forefront tankmixes for mixed stands of TSA and dogfennel
- TSA demonstration trials
- Blackberry Control with Telar, Cimarron and Remedy
- Basal bark, hack and squirt demonstration for woody species control
- Cogongrass management

11:45
Travel to Range Cattle REC

12:00 – 1:30
Lunch at Range Cattle REC

1:30
Adjourn

Tour Speakers

Dr. Brent Sellers, Extension Weed Specialist and Asst. Professor, University of Florida-IFAS Range Cattle REC and Dept. of Agronomy

Dr. Jason Ferrell, Extension Weed Specialist and Asst. Professor, University of Florida-IFAS Department of Agronomy

Dr. Greg MacDonald, Weed Scientist and Assoc. Professor, University of Florida-IFAS Department of Agronomy

Dr. Ken Langeland, Weed Scientist and Professor, University of Florida-IFAS Center for Aquatic and Invasive Plants and Department of Agronomy

CEU and CCA Credits

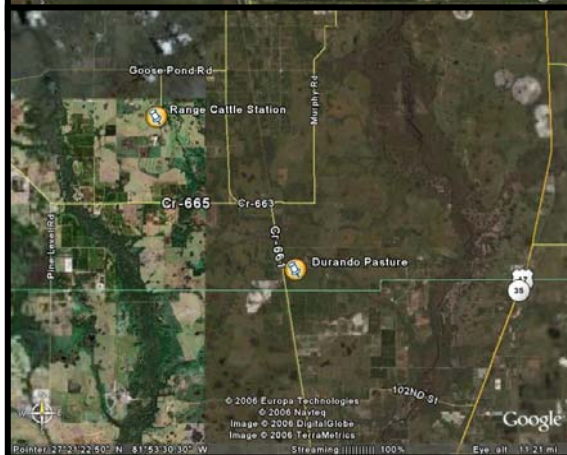
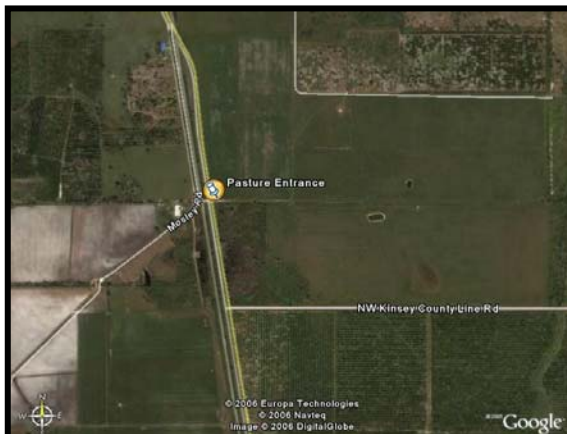
We are currently applying for CEU and CCA credits. Those needing such credits will be asked to sign in when arriving at the pasture and sign out at the end of the program.



Directions

From SR64: Travel South on CR663 past the Range Cattle REC and through Limestone Community. The pasture will be on the left hand side of the road approximately 0.3 miles past the railroad tracks.

From SR70: Travel North on CR661. The pasture is on the right approximately 0.2 miles north of the DeSoto-Hardee County Line (Kinsey County Line Road).



PLEASE RSVP

We will need to know how many people we will be serving for lunch. Please contact Ms. Andrea Dunlap at (863) 735-1314 or email her at asdunlap@ufl.edu. A \$10 registration fee made payable to the South Florida Beef Forage Program should be sent directly to Ms. Andrea Dunlap, 3401 Experiment Station, Ona, FL 33865.



UF UNIVERSITY of
FLORIDA
IFAS Extension

Pasture Weed Day



**Wednesday, October 11
9:00 AM**

**\$10 Pre-Registration
\$30 On-site registration**

UF UNIVERSITY of
FLORIDA
IFAS Extension

**The South Florida Beef- Forage Program
Participating Extension Agents:**

| | | |
|------------------|-----------------------------------|----------------|
| DeSoto County | Jim Selph | (863) 993-4846 |
| Glades County | Shelley Humphries | (863) 946-0244 |
| Hardee County | Lockie Gary | (863) 773-2164 |
| Hendry County | Sonja Crawford Les Baucum | (863) 674-4092 |
| Highlands County | Gary Mikulecky | (863) 402-6540 |
| Hillsborough Co. | Steffany Dragon Brent Broaddus | (813) 744-5519 |
| Manatee County | Christa Carlson | (941) 722-4524 |
| Okeechobee Co. | Pat Hogue Pat Miller | (863) 763-6469 |
| Polk County | Brantley Ivey | (863) 519-8677 |
| Collier County | Robert Halman | (239) 353-4244 |

Participating Specialists:

Range Cattle REC, Ona Dr. John Arthington
 Dr. Brent Sellers
 Dr. Joao Vendramini

Southwest FL REC, Immokalee Dr. Ike Ezenwa

UF Animal Science Dept., Gainesville Dr. Matt Hersom

**Other Grazing Management School
Speakers:**

UF Agronomy Dept. Dr. Lynn Sollenberger
 Forage Mgmt & Nutrition

UF Animal Science Dept. Dr. Bill Brown
 Cattle Nutrition



**Persons requiring special accommodations
per the Americans with Disabilities Act
should contact Lockie Gary at (863) 773-
2164 at least (5) five working days prior to
the conference.**



The Institute of Food and Agricultural Sciences (IFAS) is an Equal Employment - Affirmative Action Employer authorized to provide research, educational information and other services only to individuals and institutions that function without regard to race, color, sex, age, handicap or national origin. U.S. DEPARTMENT OF AGRICULTURE, COOPERATIVE EXTENSION SERVICE, UNIVERSITY OF FLORIDA, IFAS, FLORIDA A&M UNIVERSITY COOPERATIVE EXTENSION PROGRAM AND BOARDS OF COUNTY COMMISSIONERS COOPERATING.

**2006 GRAZING MANAGEMENT
SCHOOL**

**September 27 – 28, 2006
Hardee County
Agricultural Civic Center
Wauchula, FL**



Sponsored By:

**The South Florida Beef-Forage Program
University of Florida
IFAS Extension**

GRAZING MANAGEMENT SCHOOL

This course is sponsored by The South Florida Beef-Forage Program of the University of Florida, Cooperative Extension Service. It is conducted with the volunteer assistance of area livestock producers and Allied Industries. It represents separation of the original Forage and Pasture Management School into subject components that can be taught in a couple of days. It is part of a continuing multi-County education effort to help South-Central Florida producers raise and market high quality beef cattle, per cow, per acre, profitably.

Grazing management is the manipulation of livestock grazing to obtain defined outputs of livestock products. It involves careful management of both pasture and livestock resources to meet desired objectives. This new course is offered in a two day sessions. The theories of grazing management concepts and methods are discussed in a classroom setting during the first day, and concepts taught are supported by practical applications in the field during the second day tour to selected ranches in the area and the Ona Range Cattle Research and Education Center.

This is the first offering of a "Grazing Management School" and we encourage you and your personnel to attend. Registration fee for this school is **\$ 60.00 if returned by Sept 15, 2006, and \$ 80.00 if returned after Sept. 15, 2006.**

Registration forms can be obtained at one of the Extension offices in The South Florida Beef-Forage Program area, or by contacting one of the participating Extension Agents listed on the back of this brochure. Registrations should be **returned to, and checks made payable to:**

**South Florida Beef-Forage Program
c/o Lockie Gary
507 Civic Center Dr. Wauchula, FL 33873-9765**

Dates, times and locations are tentative and subject to change>

AGENDA

Wednesday, September 27, 2006

Grazing Management Concepts, Systems in Relation to Grass Species

Moderator: **Brantley Ivey**

- AM** 8:30 – 9:00 Introduction
Pat Hogue
- 9:00 – 9:30 Grazing Management Concepts
Dr. Lynn Sollenberger
- 9:30 – 10:00 Grazing Management Systems
Dr. Lynn Sollenberger
- Break** 10:00 – 10:15
- 10:15 – 11:00 Forage Varieties for Grazing Systems
Pat Hogue
- 11:00 – 11:45 Matching Management Concept and Systems to our Warm Season Grasses (beef & dairy) - **Dr. Joao Vendramini**
- 11:45 – 12:15 Matching Management Concepts and Systems to our Warm Season Grasses and Legumes (goats & horses)
Dr. Ike Ezenwa
- Lunch** 12:15 – 1:00
- PM** 1:00 – 1:45 Weed Control in varying grazing systems
Steffany Dragon, Dr. Brent Sellers
- 1:45 – 2:15 Pasture Establishment & Renovation
Lockie Gary
- 2:15 – 2:45 Conserved Forage Options (hay, haylage, silage), Nutritive Value and Dry Matter losses. - **Jim Selph**
- Break** 2:45 – 3:00
- 3:00 – 4:00 Understanding Forage Based Nutrition
Dr. Bill Brown
- 4:00 – 5:00 Stockpiled Forage, Supplementing Deficits in Forage Quantity and Quality
Dr. John Arthington

Thursday, September 28, 2006

ALL DAY FIELD TOUR

Moderator: **Pat Hogue**

- AM** 8:00 Arrive at the Range Cattle Research and Education Center (RCREC), Ona
- 8:15 – 8:45 Travel to Zolfo Springs (vans provided)
- 8:45 – 10:00 **Petteway Farms – Roy Petteway** – Managed Intensive Grazing with Stargrass under irrigation
- 10:00 – 10:30 Travel to Bowling Green
- 10:30 – 11:45 **Minor Bryant** - Grazing Systems on Reclaimed Mine Land
- 11:45 – 12:15 Travel to RCREC, Ona
- LUNCH** 12:15 – 1:00
- 1:00 – 2:00 **RCREC, Ona** – Ordinary rotational grazing of Mulato brachiaria, bahiagrass, stargrass and limpgrass: Effect of defoliation on Root System.
Dr. Joao Vendramini
- 2:00 – 2:30 Travel to Myakka City
- 2:30 – 3:45 **Wilderness Ranch** – Intensive rotational grazing with bahiagrass & stargrass: Limpgrass hay.
- 3:45 – 4:15 Travel back to RCREC, Ona

Adjourn 4:15

